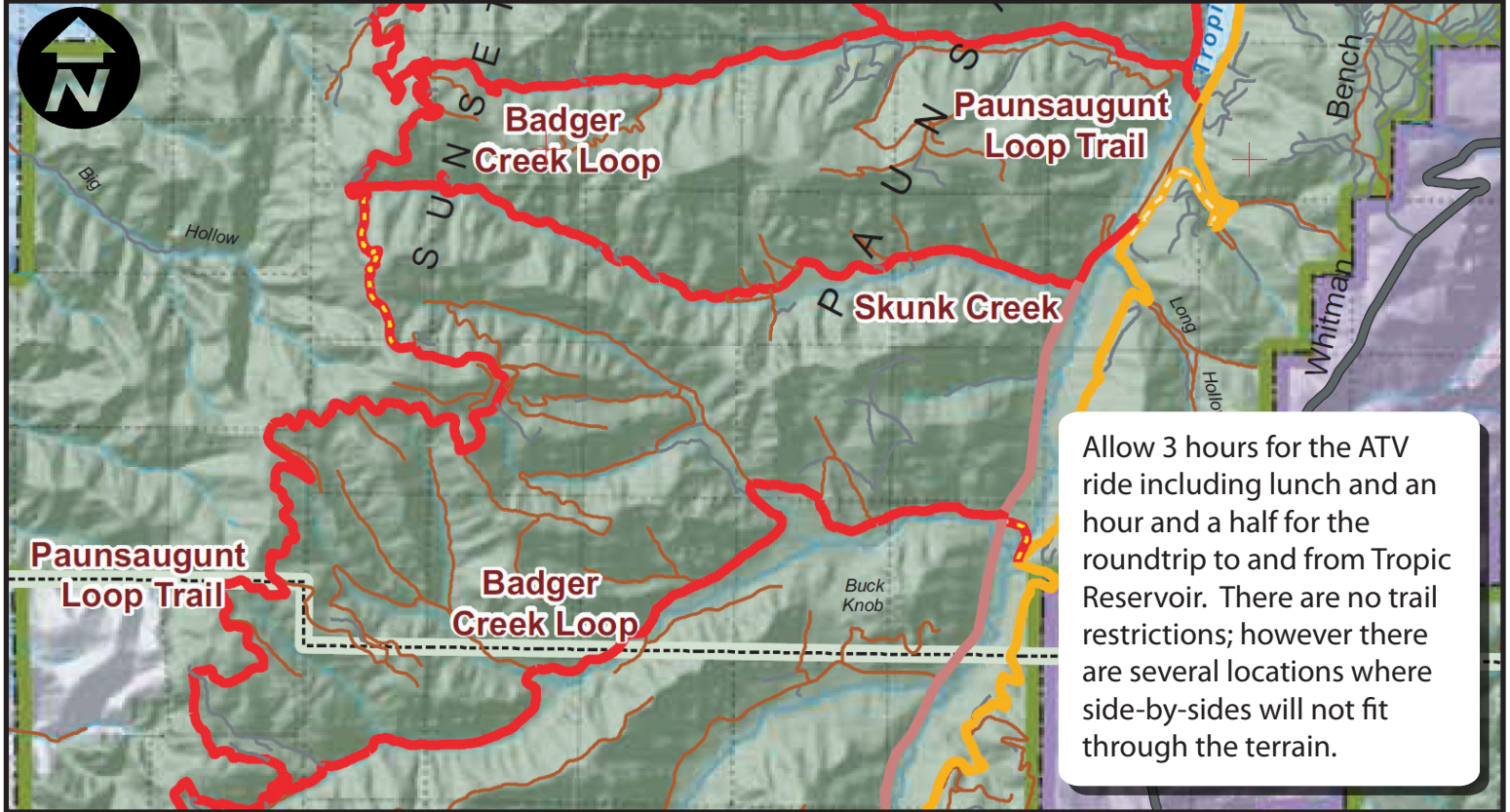


Paunsaugunt Rim Pines Loop



Twenty miles in length and is characterized by many high mountain meadows and thick forest canopy.



Allow 3 hours for the ATV ride including lunch and an hour and a half for the roundtrip to and from Tropic Reservoir. There are no trail restrictions; however there are several locations where side-by-sides will not fit through the terrain.

Skill Level - Easy

Riders must trailer to Hatch (15 miles from Panguitch) Depart on ATV's from Hatch through Proctor Canyon and along the Paunsaugunt Rim where there are several overlook views of colorful Hoodoos and spires.



After lunch make your way back to Hatch, stopping at the 9,000 foot Wilson Peak Overlook. The trail is about 75 miles.