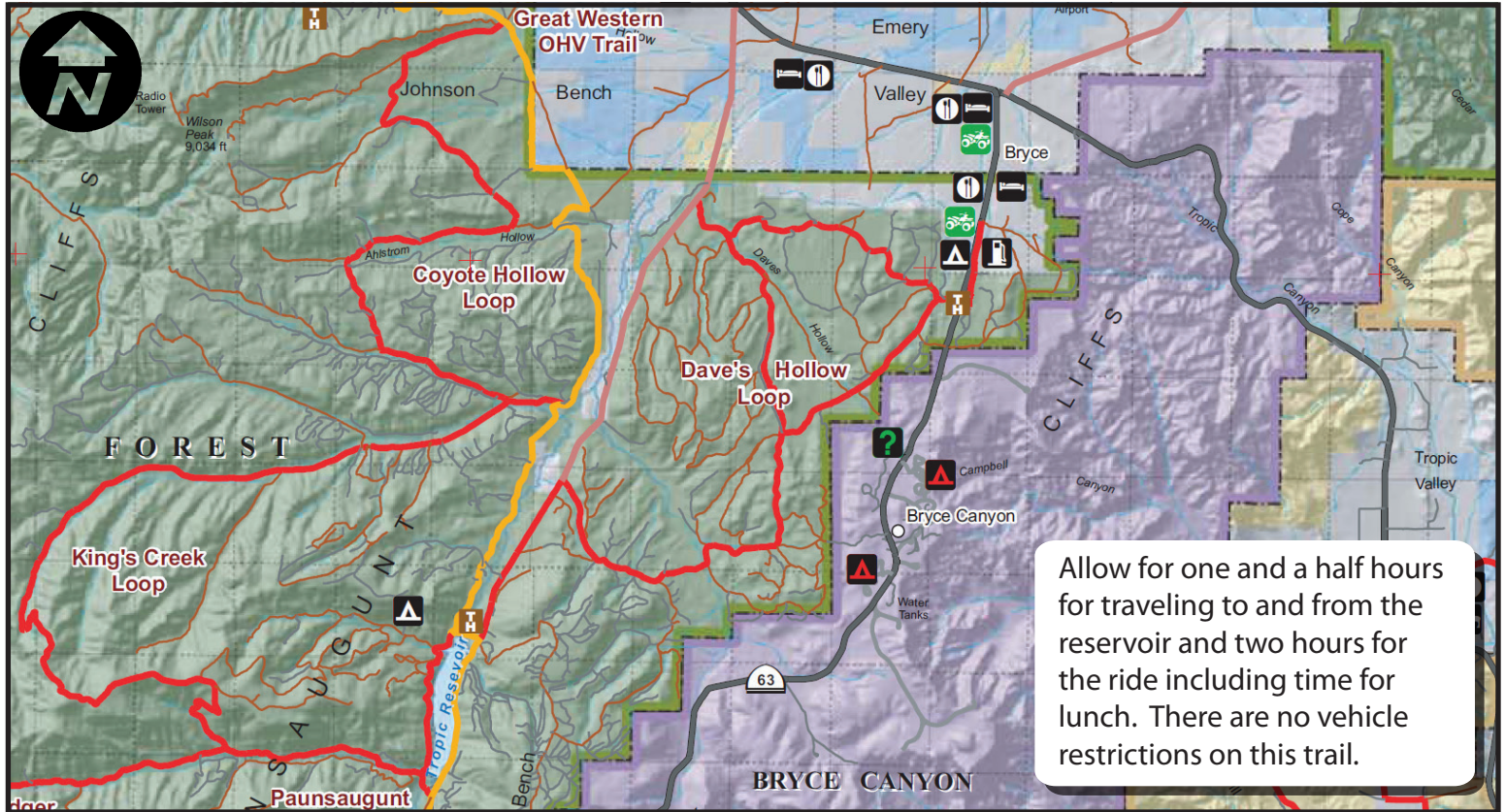


# Kings Creek/Dave's Hollow Loop

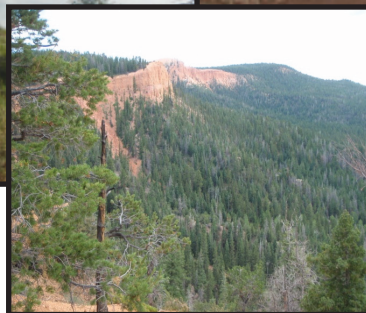


Riders will ascend to a high mountain range providing great panoramic views.



## Skill Level - Easy

Riders will need to Trailer to Hatch (15 miles from Panguitch) Depart on ATV's from Hatch up Proctor Canyon and around King Creek Loop and Coyote Hollow Loop .



After lunch make your way back to Hatch, stopping at the 9,000 foot Wilson Peak Overlook. This trail is about 75 Miles.

tread lightly!®

LEAVING A GOOD IMPRESSION



More information at [www.BryceCanyonCountry.com](http://www.BryceCanyonCountry.com) and [www.Utah-Trails.com](http://www.Utah-Trails.com)