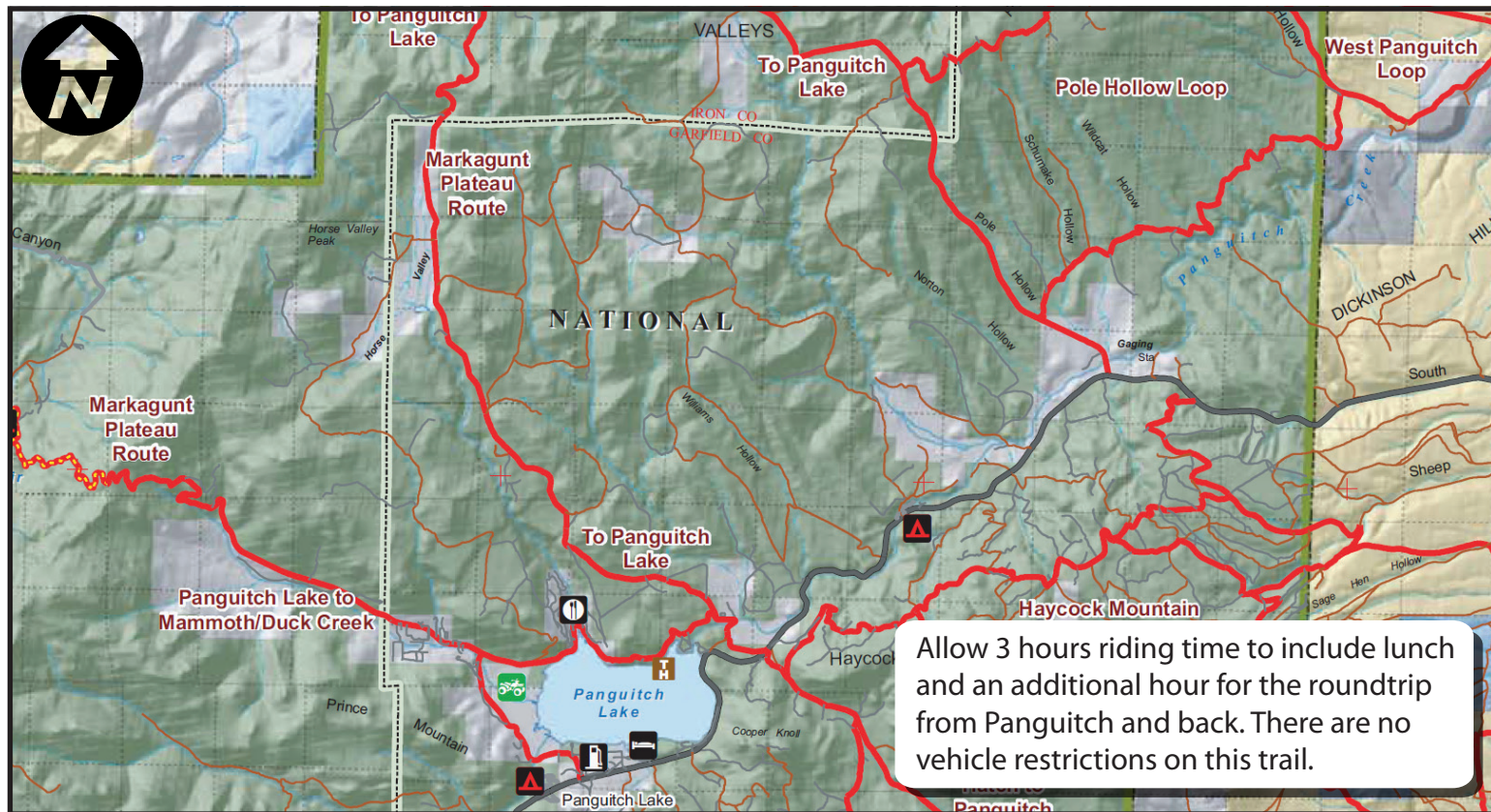


Horse Valley Ride



Enjoy great views, long meadows and quaking aspen forests.



Skill Level - Beginner

This ride is 26 miles long and begins and ends on the North Shore Road of Panguitch Lake. Riders will need to trailer their ATV's South on the Panguitch Lake Road (SR 143).



tread lightly![®]

LEAVING A GOOD IMPRESSION



More information at www.BryceCanyonCountry.com and www.Utah-Trails.com