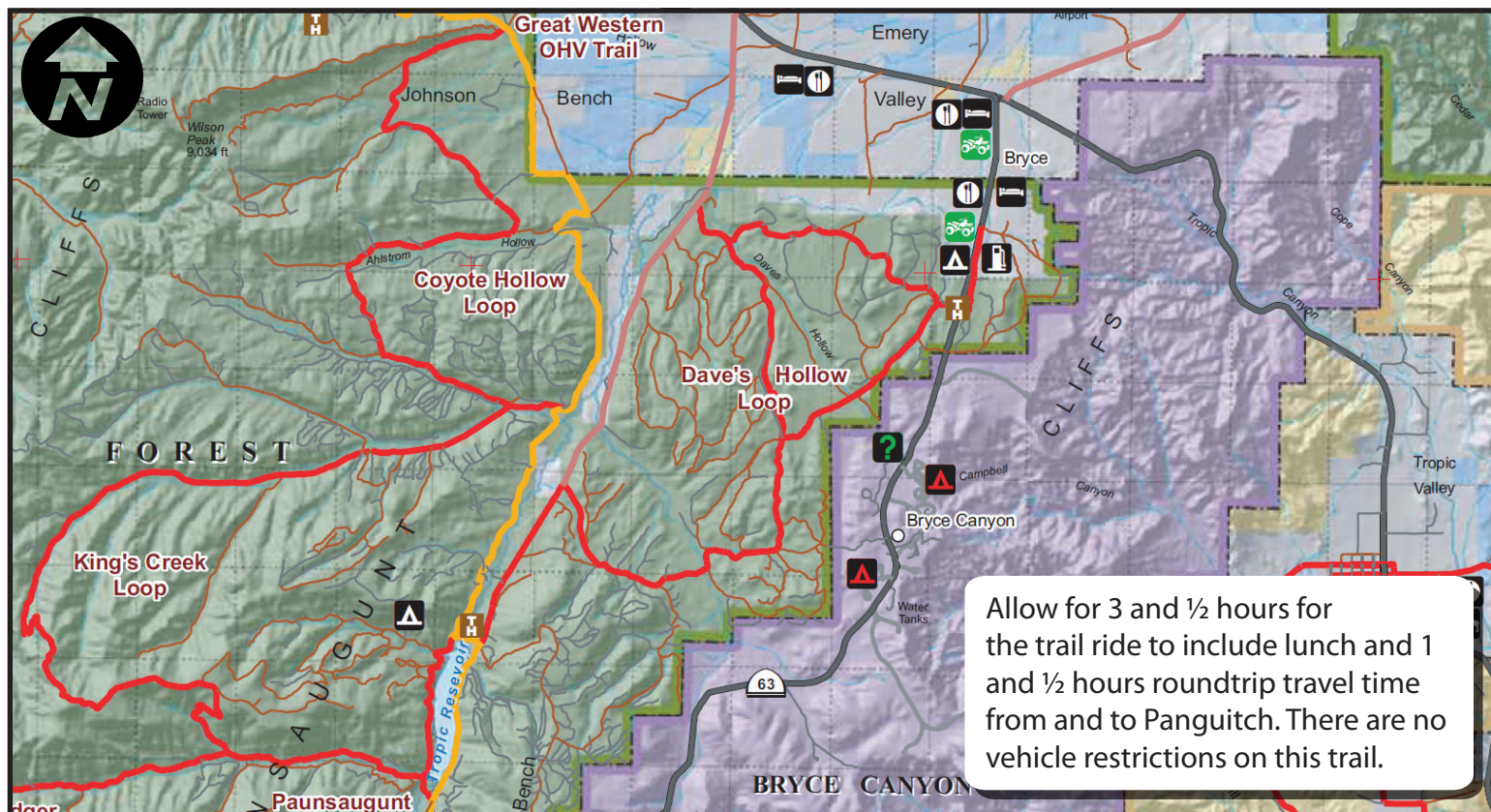


# Dave's Hollow/Coyote Hollow



Ride through pink hills, green forests and pass big meadows.



Travel in some of the most picturesque country around.



## Skill Level - Beginner

Riders will trailer their ATV's to the reservoir which is located 25 miles from Panguitch via US 89 and Scenic Highway 12 near Bryce Canyon National Park.

tread lightly!®

LEAVING A GOOD IMPRESSION



More information at [www.BryceCanyonCountry.com](http://www.BryceCanyonCountry.com) and [www.Utah-Trails.com](http://www.Utah-Trails.com)